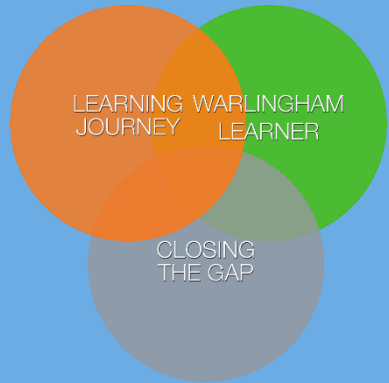




Warlingham School  
& Sixth Form College



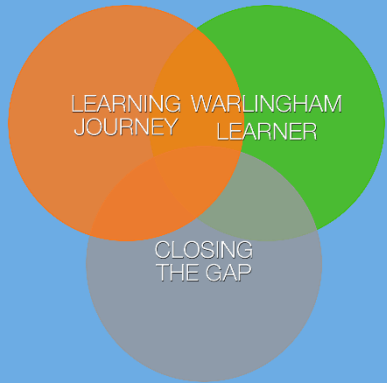
Wide Horizons  
High Aspirations

# Welcome Year 7 Parents

- Introductions
- The SEN Team
- Transition to Secondary
- Interventions
- Student profiles and provision maps
- Assessments and EHCPs
- Arbor, Satchel and Wisepay
- Clubs
- How can you help us?
- Any Questions?



Warlingham School  
& Sixth Form College



Wide Horizons  
High Aspirations

# Introduction



Beth Hunt  
SENDCO

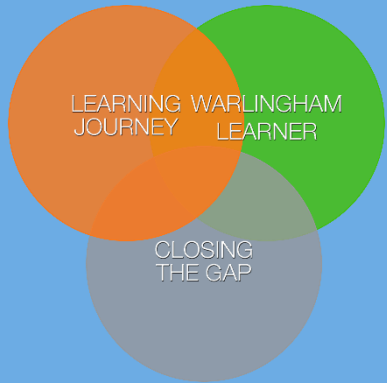
[b.hunt@warlinghamtlt.co.uk](mailto:b.hunt@warlinghamtlt.co.uk)  
01883624067 Ext: 2004



Rick Toop  
Assistant Head  
[r.toop@warlinghamtlt.co.uk](mailto:r.toop@warlinghamtlt.co.uk)  
01883624067

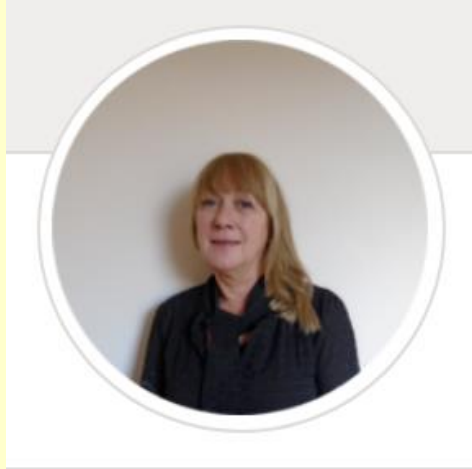


Warlingham School  
& Sixth Form College



Wide Horizons  
High Aspirations

# The SEN Team



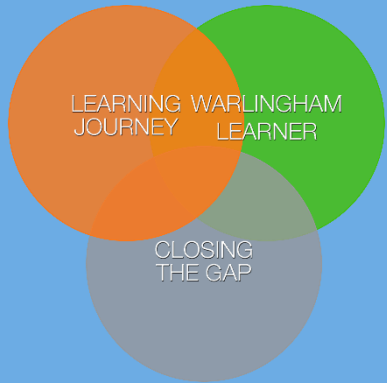
Sharon Bolton  
Assistant SENDCo  
[s.bolton@warlinghamtlt.co.uk](mailto:s.bolton@warlinghamtlt.co.uk)  
01883624067 Ext: 2227



Caroline Pantony  
PA to SENDCo  
[c.pantony@warlinghamtlt.co.uk](mailto:c.pantony@warlinghamtlt.co.uk)  
01883624067 Ext: 2019



Warlingham School  
& Sixth Form College

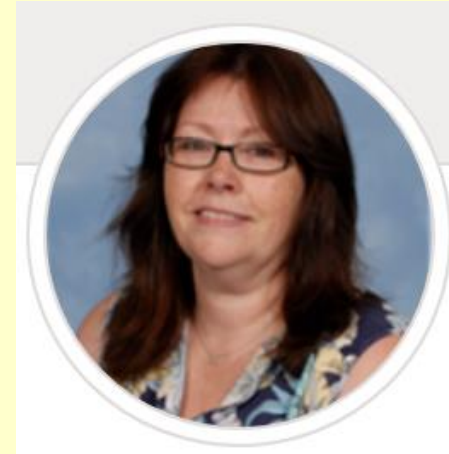


Wide Horizons  
High Aspirations

# Senior TAs



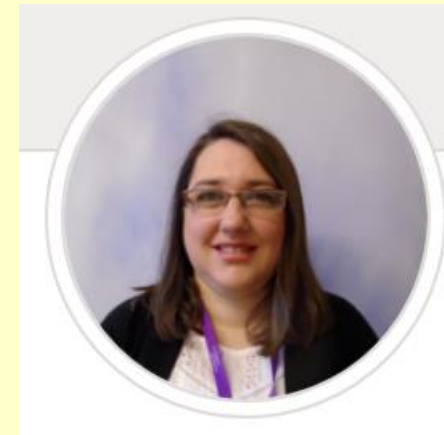
**Carol Scott**  
House TA (Chichester)  
Behaviour Support  
ELSA



**Sue Gates**  
House TA (Mallory)  
ELSA



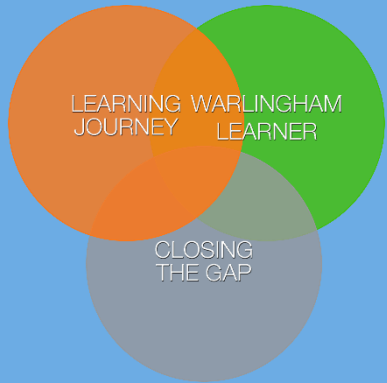
**Daniel Collison**  
House TA (Johnson)  
ASD Support



**Claire Egerton**  
House TA (Sharman)



Warlingham School  
& Sixth Form College

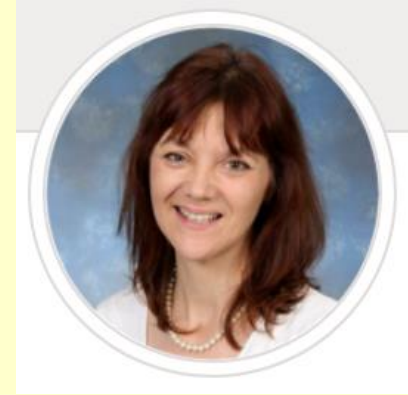


Wide Horizons  
High Aspirations

# Senior TAs



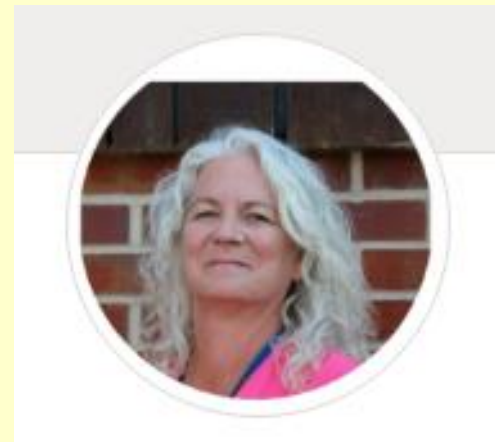
Marion Cudlip  
Assessments  
Literacy Support



Carolyn Adams  
1:1 English



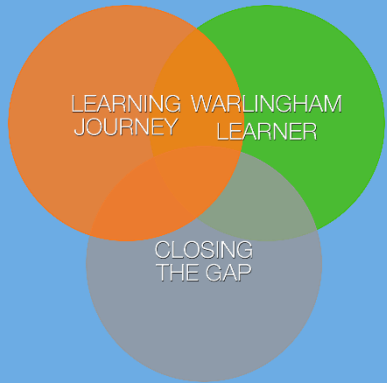
Meena Patel  
Assessments  
Numeracy  
Support



Carolyn Murphy  
Nurture Teacher



Warlingham School  
& Sixth Form College



Wide Horizons  
High Aspirations

# Senior Tas / The Bridge



Donna Poole  
Bridge  
Coordinator



Helen Curt  
Learning  
Mentor  
(The Bridge)



Lorraine  
Sheppard  
Counsellor  
LAC /  
Young  
Carers

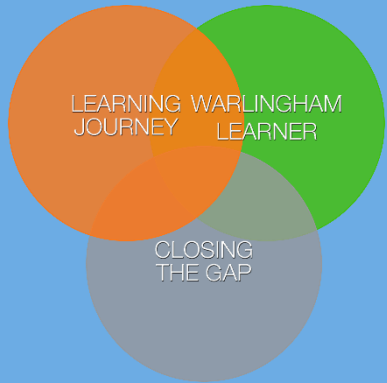


Sharon  
Rickard  
Counsellor





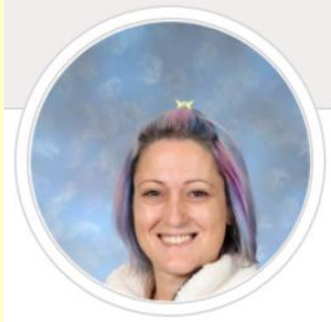
Warlingham School  
& Sixth Form College



Wide Horizons  
High Aspirations

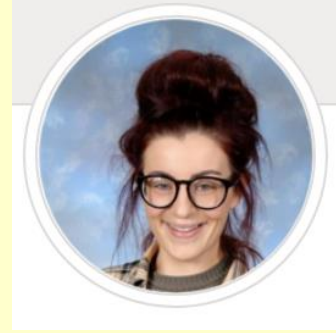


Jon Mitchell

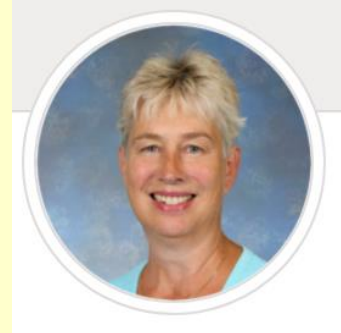


Michelle Sansom

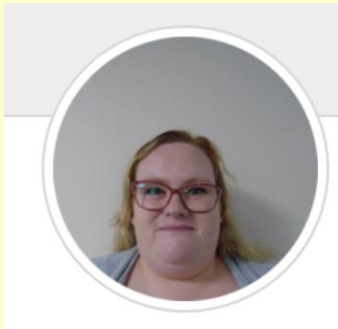
# TAs



Charlotte  
Saunders



Kate Dawson



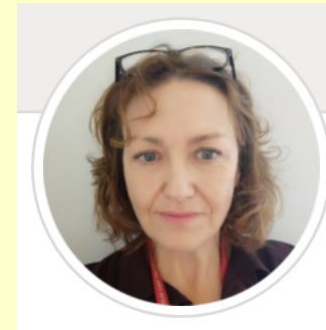
Casey Young



Anna Kruk



Phoebe  
Rayner



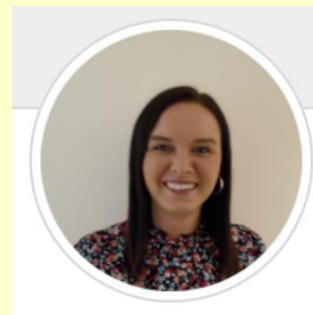
Kay Linsdell



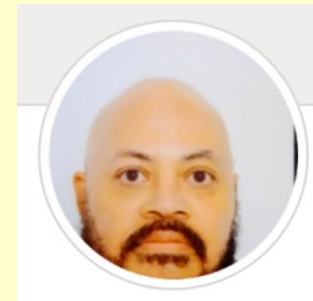
Christelle  
Bothua



Mel Pegrum



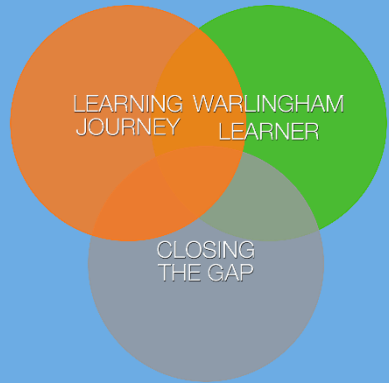
Lisa Fox



Colin Wiggan



Warlingham School  
& Sixth Form College



Wide Horizons  
High Aspirations

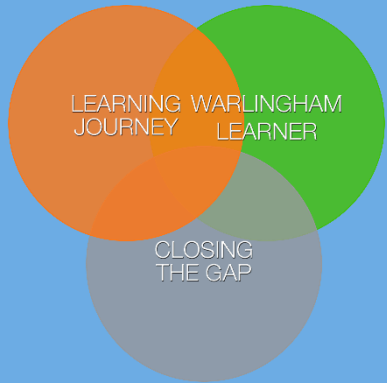
# Transition to Secondary

## Where does the information come from?

- Information from primary schools
- Visits to primary schools
- CTF forms
- Induction day observations
- Parent enquiries
- Special provisions e.g. hearing impairment service, EHCPs

We check all students before adding them on to the SEN register.

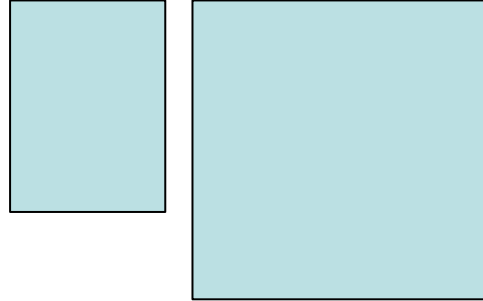




# Student Profiles and Provision Maps

## Student Profile - Warlingham School

Date: 4/11/2022  
Teacher: Mrs Bethany Hunt



### How best to support me:

- [ ] may need movement breaks in lesson, he won't always ask for this so if he is tapping or swinging on his chair, he can be asked by his teacher if he needs to move.
- Help with time management - now/next board - reminders
- [ ] needs to be informed about transitions or change - helps with impulsive behaviours

### Other ways to support me:

- Allow fidget tool
- [ ] needs reminders about home learning and will attend homework club - he can get overwhelmed with home learning so please do remind him
- [ ] does lose things and finds it stressful packing for school/ PE so he needs his teachers to be gentle with him to avoid frustration with himself

### What is important to me:

- Family
- Enjoys football club and gaming
- Music - singing
- We have a dog - Evie

### SEN Status

- SEN Support

### Current Needs:

- Social, Emotional or Mental Health - ADHD

### Access Arrangements:

- tba

### Reading Age:

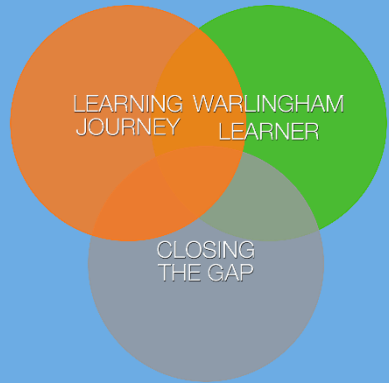
- 11 years 8 months
- Standard Score 110

### Spelling Age:

- 11 years 7 months
- Standard Score 100



Warlingham School  
& Sixth Form College



Wide Horizons  
High Aspirations

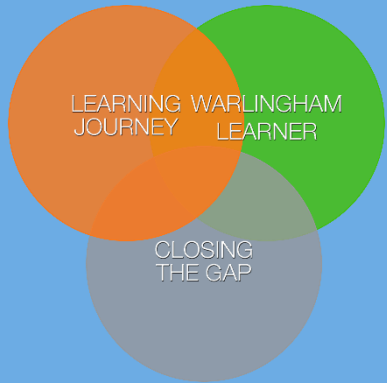
# Interventions

## What do we put in place to support students?

- 🛡 Catch up Literacy and Numeracy
- 🛡 Maths and English 1:1
- 🛡 ASD intervention and social skills
- 🛡 ADHD intervention course
- 🛡 ELSA support
- 🛡 ELKLAN and Speech and Language interventions
- 🛡 Dyslexia and Dyscalculia 1:1 support
- 🛡 Transition groups
- 🛡 Social skills groups
- 🛡 EAL support
- 🛡 Lunch and Homework Club
- 🛡 Use of assistive technologies
- 🛡 External agencies – BMS, Learning Space, ASD outreach, SALT, CAMHS



Warlingham School  
& Sixth Form College



Wide Horizons  
High Aspirations

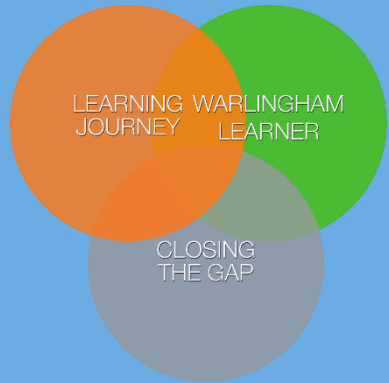
# Assessments and EHCPs

## How do we assess students?

- 🛡️ CATS 4 – verbal and non verbal reasoning
- 🛡️ Reading and spelling tests
- 🛡️ Diagnostic screeners – dyslexia, ASD, ADHD, processing
- 🛡️ Boxhall profiling
- 🛡️ SNAP – SPLD and SNAP – B
- 🛡️ Access arrangements
- 🛡️ CAMHS referrals
- 🛡️ EHCPs



Warlingham School  
& Sixth Form College



Wide Horizons  
High Aspirations

# How can you help us?

- **Communicate**
- **Be understanding**
- **Support in meeting expectations**
- **Any additional work / reading / research / visits at home**
- **Don't panic!**