

SCHOOL IMPROVEMENT PLAN OVERVIEW 2023-24



Warlingham School
& Sixth Form College

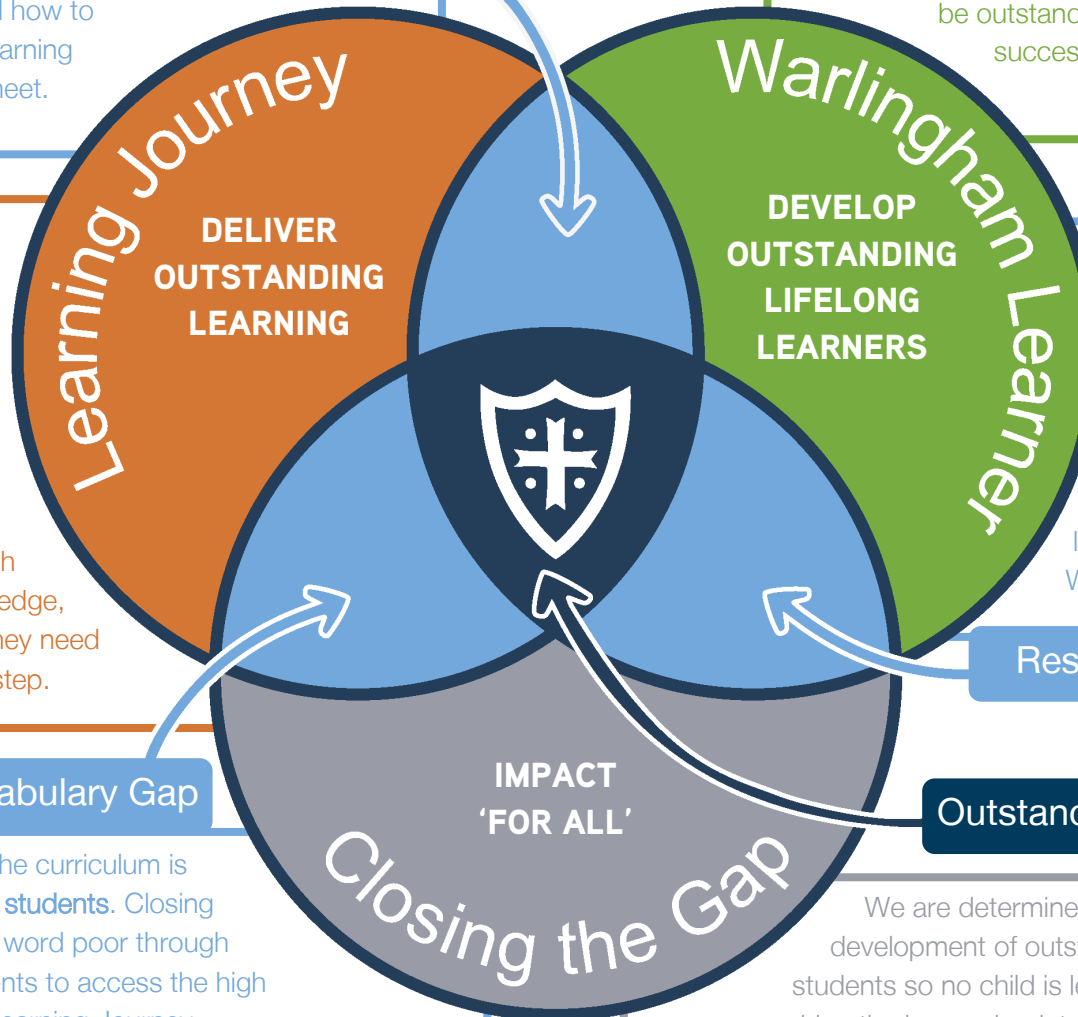
Securing the foundations to ensure impact

High quality teaching includes developing the students as learners. Ensuring they understand how they learn, techniques for memorisation of key knowledge and how to maximise their success is where the Learning Journey and the Warlingham Learner meet.

Metacognition

The Warlingham Learner is the means by which we articulate and develop the skills and personal attributes students need to be outstanding lifelong learners able to be happy and successful in school and in life beyond school.

We are committed to providing consistently high quality teaching and learning and the means for delivering this is encapsulated in our Learning Journey model. We are also committed to ensuring our curriculum provides a coherent framework for progression within, between and beyond subjects - a curriculum through which the students develop the knowledge, skills and conceptual understanding they need to successfully progress to their next step.



One of the keys to success as a learner and in life is the ability to overcome obstacles and setbacks. Developing resilience and a growth mindset will support our mission to ensure the development of our students into outstanding lifelong learners through the Warlingham Learner is achieved **'for all'**.

Resilience

Closing the Vocabulary Gap

Key to effective teaching in all parts of the curriculum is the development of language **for all our students**. Closing the gap between the word rich and the word poor through our teaching is key to enabling all students to access the high quality teaching delivered through the Learning Journey.

Outstanding lived experience of school

We are determined to deliver outstanding learning and the development of outstanding lifelong learners **for all** our students so no child is left behind and all are supported in reaching the key end points in the curriculum for knowledge, skills